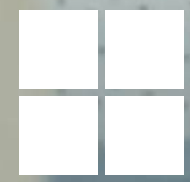


HP with Windows 11 available from TD SYNnex



Windows 11



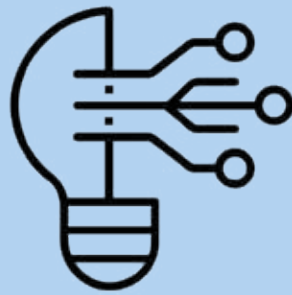
TD SYNnex

Empower your business with HP and Windows 11 Pro

In today's dynamic business landscape, staying ahead requires the right tools and technology. With Windows 10 end of support coming in October 2025, it's crucial to modernise your devices now to avoid potential risks and stay competitive.



- Upgrade to HP devices with Windows 11 Pro to enable your workforce to work securely from anywhere
- Don't wait until it's too late - modernising today can save your business from costly consequences tomorrow



- Gain a competitive edge with HP's cutting-edge devices featuring Windows 11 Pro, designed to harness the power of AI for improved insights and efficiency
- Reduce maintenance costs, minimise security risks, and boost employee productivity and satisfaction by upgrading to the latest technology

Discover how HP and Windows 11 Pro can help you unlock the full potential of your business and prepare for the future of work.



64%

of surveyed employees say they struggle with having enough time or energy to do their job¹

This powerful combination of HP and Windows 11 Pro delivers:



Unmatched Security



AI-Powered Innovation



Seamless Collaboration

250%

Whether your team is working in the office, at home, or on the go, HP and Windows 11 Pro provide the tools they need to succeed whilst delivering a 250% ROI² that drives long-term success.

1. Will AI fix work? Work trend index annual report, Microsoft, May 2023.
2. Commissioned study delivered by Forrester Consulting "The Total Economic Impact of Windows 11 Pro Devices", December 2022. Note, quantified benefits reflect results over three years combined into a single composite organization that generates \$1 billion in annual revenue, has 2,000 employees, refreshes hardware on a four-year cycle, and migrates the entirety of its workforce to Windows 11 devices.



Security

Fortify your business against evolving threats



Safeguarding your business is our top priority. HP Wolf Security, combined with Windows 11 Pro's built-in security features, provides comprehensive protection against advanced cyber threats.

Robust Security Features:

Hardware-based isolation, virtualisation-based security (VBS), and hardware-enforced stack and heap protection.

HP Sure Click extends hardware-enforced isolation beyond Windows 11 Pro's Smart App Control.

Proactive Protection:

HP Tamper Lock protects against physical attacks on PC internals.

HP Sure Start, the world's only self-healing BIOS, automatically recovers from firmware attacks.

83% of organisations experienced at least 1 firmware attack in the past 2 years¹

With HP's robust security solutions and Windows 11 Pro's advanced features, your employees can work confidently from anywhere, even as cyber threats continue to evolve.

Sustainability

Driving progress toward a more sustainable future



HP is committed to creating a sustainable future by reducing environmental impact throughout the product lifecycle. HP's Windows 11 Pro devices are designed with sustainability in mind, featuring recycled materials, energy-efficient components, and responsible packaging. By choosing HP, you partner with a global leader that prioritises environmental responsibility.

Over 95%² of home and office printers, laptops, notebooks, displays, and workstations shipped to customers included recycled materials.

Addressed 32%³ of HP's total fiber footprint for paper used in products and print services to counteract possible deforestation.

Achieved an 87.7%⁴ landfill diversion rate globally in HP operations.

75% HP are targeting 75% circularity for products and packaging by 2030⁵

Together, we can work towards a more sustainable future whilst providing your team with the tools they need to succeed.

AI and innovation

Revolutionise your workflow



Experience the power of AI and innovation with the industry's largest portfolio of AI-enhanced PCs from HP, powered by Windows 11 Pro.

AI-Powered Collaboration:

AI-powered HP Presence ensures professional-quality video conferences from anywhere.

Advanced features like AI noise reduction, auto-frame, and light adjustment ensure effective collaboration from any location.

Intelligent Productivity:

Integrated Windows Copilot provides quick access to intelligent features, making it easier to navigate and multitask.

Copilot's AI assistant offers personalised UI recommendations and more, allowing employees to unlock meaningful focus.

70% of employees say they would use AI to lighten their workload⁶

Unleash your team's potential while HP and Windows 11 Pro's cutting-edge innovations handle the rest. Experience the power of AI-powered efficiency that adapts to your needs.

Productivity & collaboration

Empower your hybrid workforce



HP devices with Windows 11 Pro are built to boost productivity and enhance collaboration in today's hybrid work environment.

With **89% of employees**⁷ stating that outdated technology directly impacts their productivity, it's crucial to equip your team with the latest tools.

Windows 11 Pro's intuitive interface, combined with HP's innovative features like HP QuickDrop and HP Quick Touch, streamlines workflows and enables seamless collaboration.

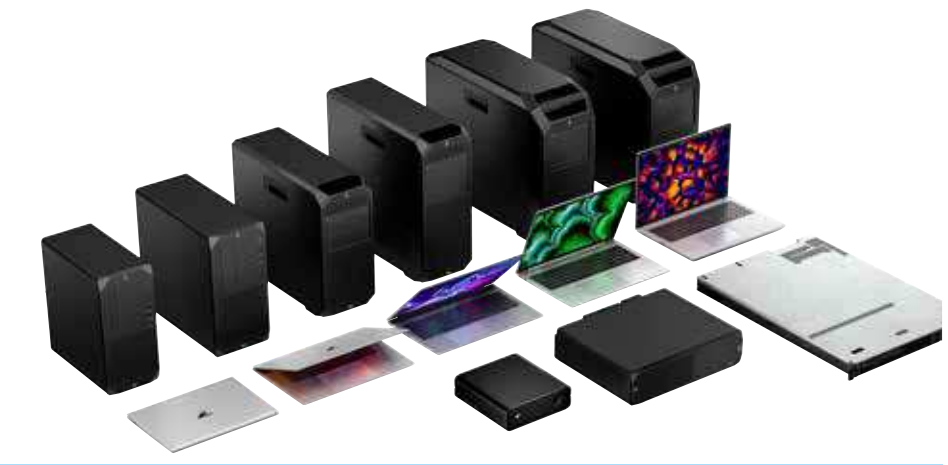
Empower your team to work smarter, not harder, with HP and Windows 11 Pro.

50% Windows 11 Pro devices deliver 50% improved performance⁸

Unlock the full potential with HP and Windows 11 Pro, and experience the power of enhanced productivity and collaboration that adapts to the needs of your hybrid workforce.

Supply chain resilience

Count on reliable delivery and support



In today's unpredictable business landscape, a resilient supply chain is crucial. HP's global scale and strategic partnerships ensure that you can rely on a stable supply of devices to keep your business running smoothly.

With HP's world-class supply chain management, recognised by Gartner's 2023 Supply Chain Top 25 list, is built on:

Global Presence: With a worldwide network of manufacturing facilities, distribution centres, and logistics partners.

Strategic Partnerships: HP collaborates with key suppliers and partners to ensure a stable and reliable chain, minimising the risk of disruptions.

Transparency and Responsibility: HP maintains strict ethical and social responsibility standards throughout the supply chain.

95% of HP's total production supplier spend have gone through a social and environmental assessment⁹

HP's proactive approach to supply chain resilience means you can focus on driving your business forward, knowing that your technology needs are in good hands.

1. Security Signals, Microsoft, March, 2021.

2-4. Go Beyond, 2022 HP Sustainable Impact Report

5. <https://sustainability.ext.hp.com/en/support/solutions/articles/35000064510-has-hp-established-environmental-guidelines-for-product-packaging>

6. Will AI fix work? Work trend index annual report, Microsoft, May 2023.

7. Adobe Blog: Future of Digital Work Enterprise insights: Productivity is a shared responsibility rooted in tech (Jul. 2023) <https://blog.adobe.com/en/publish/2023/07/27/future-digital-work-enterprise-insights-productivity-shared-responsibility-rooted-in-tech>

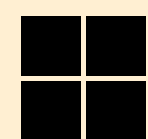
8. Compared to Windows 10 devices. Improve your day-to-day experience with Windows 11 Pro laptops, Principled Technologies, February, 2023.

9. Go Beyond, 2022 HP Sustainable Impact Report

Upgrade to HP devices with Windows 11 Pro and unlock the full potential of your organisation.

Experience the power, security, and flexibility that only HP and Windows 11 Pro can deliver.

Contact HP today to learn how our tailored solutions can help you achieve your business goals.



Windows 11



The power of partnership!

Together, HP and TD SYNEX offer you excellent customer service and an unrivalled product portfolio that enables you to grow your business, whilst increasing your profit, reducing costs and supporting your customers with their every requirement.

Partnering with TD SYNEX for HP brings you one step closer to becoming a true trusted advisor to your customers. We work hard to drive your success, providing you with value-added services that span across marketing, sales, strategic business development, technical expertise, financial services, procurement, logistics and training.

A reliable distribution network

TD SYNEX offer a strong and efficient distribution network, providing the timely delivery of HP products, minimising delays and ensuring that your customers receive their orders promptly.

Specialist expertise and support

TD SYNEX are always on-hand to provide expert guidance and support to customers. We offer insights into HP products, assisting with product selection, and providing technical expertise to address any queries or concerns.

Efficient logistics and fulfilment

TD SYNEX invests in robust logistics and fulfilment capabilities, streamlining the ordering process and ensuring accuracy in order fulfilment, leading to a seamless customer experience.

